



Construction Module

nanoCAD's **Construction module** extends the nanoCAD platform with AEC drafting utilities and a library of standard parametric elements. It is designed to automate the preparation of construction drawings and documentation.

+91 9748468686 ✉ sales@nanocad.in 🌐 www.nanocad.in

 **nanoCAD**
ENGINEERING ECOSYSTEM

New in Construction Module

- ✓ Import large IFC files (1 Gb+)
- ✓ BCF
- ✓ Quick Selection of frozen and hidden layers

Features

Smart Drawing Elements

The Construction module includes a massive number of smart drawing elements to automate routine operations like layout generation, sectioning, and detailing of buildings.

- ✓ Database of parametric elements
- ✓ Technical specifications editor
- ✓ Breaks for hiding underlying geometry
- ✓ Designation of permanent joints

Smart Drawing and Editing Utilities

The Construction module turns entities that look like tables (lines and text) into table objects. It offers utilities for automatically numbering drawing objects, increasing and decreasing selected areas, and creating custom objects with parametric properties.

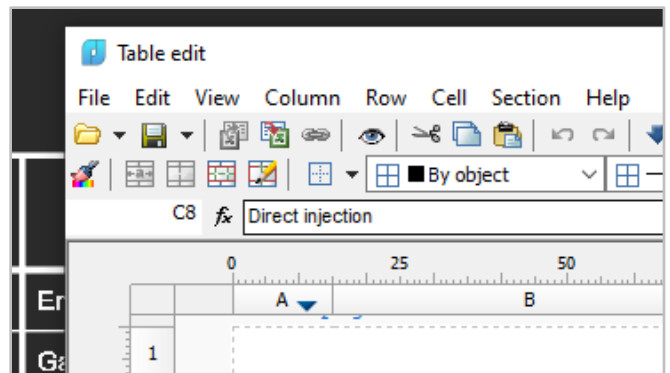
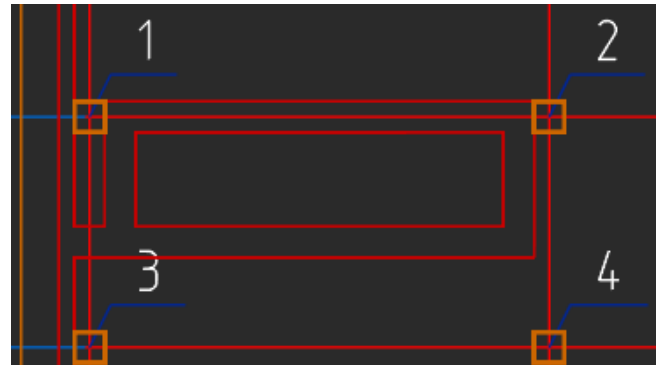
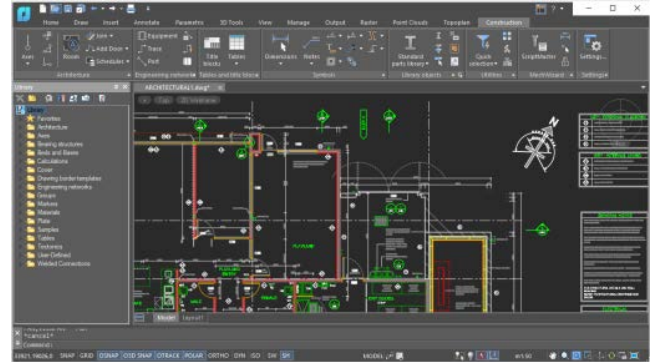
- ✓ Define custom hatch patterns in *.pat files
- ✓ Draw fully customized arrays of objects
- ✓ Create and calculate plate arrays
- ✓ Design hole charts

Powerful Table Editor

The Construction module features a very powerful built-in table editor that generates tables of any complexity. Users can convert tables imported from other CAD programs to nanoCAD's own format. As well, it recognizes tables made from primitives. Tables offer the following functions:

- ✓ In-place editing of tables
- ✓ Pencil sketching in cells
- ✓ Cell styles that specify text styles, alignments, line weights, value rounding
- ✓ Table headers and footers

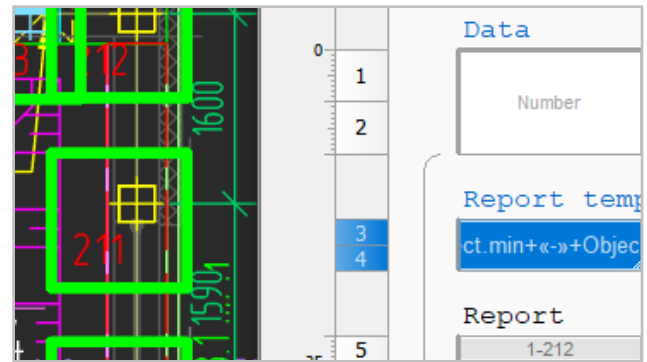
- ✓ Setting the object coordinate system by UCS
- ✓ Conversion of AutoCAD tables into Construction tables with the current scale



Automatic Reports

The Construction module creates reports from lists, specifications, and object data in drawings. Reports access data extracted from objects, architectural components, design elements, blocks with attributes, and the Construction module's library of parts.

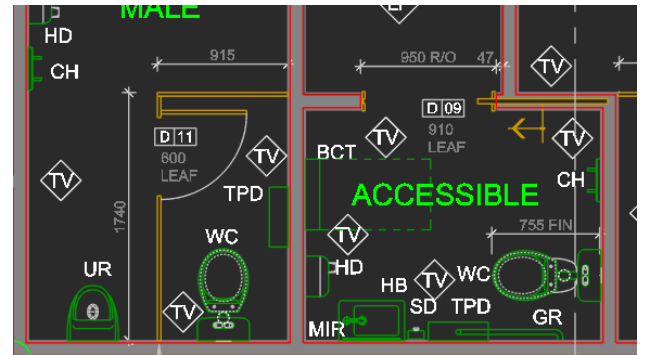
- ✓ Generate analyses directly from rooms in drawings
- ✓ Automatically update reports as properties of objects change
- ✓ Save reports as templates for use in other drawings to generate the same kinds of reports and analyses
- ✓ Functions are available to all users, with no programming needed



Architectural Layouts

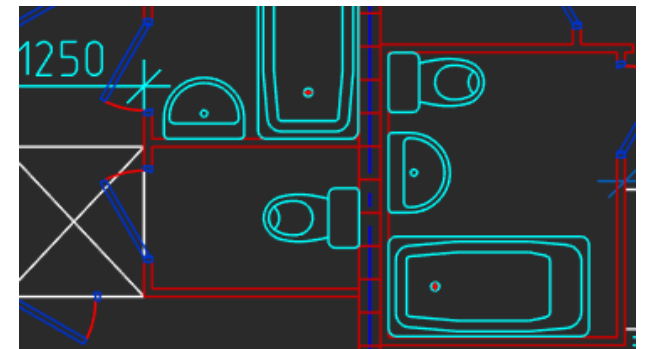
The Construction module lays out building plans using discipline-specific tools and objects:

- ✓ Straight and arc-shaped walls that join automatically
- ✓ Custom templates for walls that define geometry, attributes, and multi-layer (ply) construction properties
- ✓ Walls edited with trim, break, and join commands, or by using grips
- ✓ Insertion of windows and doors using the built-in database of components



Engineering Networks

The Construction module includes a set of tools for engineering networks, such as internal communications, HVAC, and gas supplies, with templates for traces, equipment, and connectors.



Parametric Borders and Title Blocks

The Construction module provides drawing borders and title blocks that are parametric. This saves you time when completing drawings:

- ✓ Multi-view drawing borders use dedicated grips and switches to change their size, format, and orientation
- ✓ Special grips change aspects of title blocks
- ✓ Stamps dialog box fills in reusable text in title blocks

In addition to the collection of pre-made drawing borders and title blocks, you can create your own parametric borders and stamps using the Format and Stamp Wizard.

